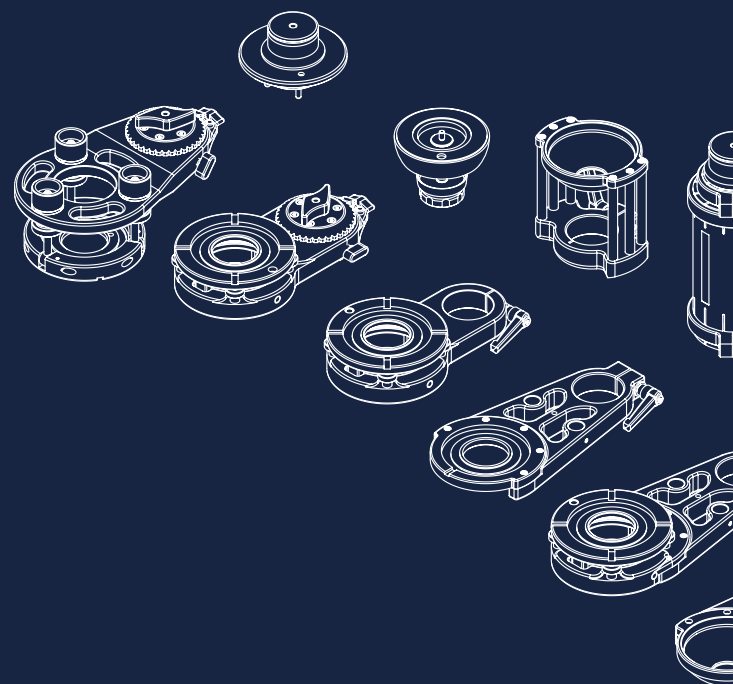
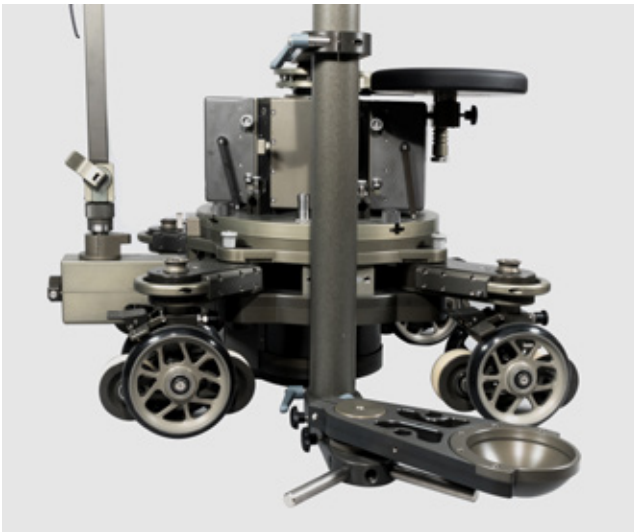


// ACCESSORIES



// GF-COMBI-RIG



GF-Combi-rig on the GF-Primo Dolly
as a low rig

The GF-Combi-rig utilizes the diameter of the standard Euro-adapter (80 mm) to enable a combination of tubes and off-set mounts for multitude of solid rigging options.



AL-2360 GF-Combi-rig – 3 tubes 15/35/73 cm [6" / 14" / 29"],
1 top section 41 cm / 16", 2 safety screws



AL-2370 Off-set Euro-adapter extension +
AL-2371 Foot support set [2 pcs.]



AL-2131 Short top section for Combi-rig
[25 cm / 10"]

// GF-HILO SWIVEL



GF-HiLo Swivel
with GF-Combi-rig tube
on GF-Primo Dolly

The GF-HiLo Swivel Brackets enable a fluid change of camera position from high to low or underslung to overslung within seconds.

The speed clamps have an active engage and disengage locking mechanism.



AL-2376 long section [41 cm / 16"]
with speed clamp adjustment system
AL-2377 short section [23 cm / 9"]
with speed clamp adjustment system



GF-7005/2 Swivel Bracket for
GF-Primo/Secondo turnstile Mount



AL-2379 Short Swivel section [29 cm / 11.4"]
w. speed clamp adjustment / w. 150 mm
Bowl [Mitchell plate also available]



AL-2378 Long Swivel section [41 cm / 16"]
w. speed clamp adjustment / w. 150 mm Bowl
[Mitchell plate also available]

// GF-3D COMBI-RIG



GF-3D Combi-rig in low mode setup on the GF-Primo Dolly

The GF-3D Combi-rig is a solution for providing a stable mount for large camera packages and 3D Rigs on a centre post dolly. Two 80 mm diameter tubes from the standard GFM Combi-rig can be used in combination with the »double tube« top and bottom mounts. The bottom mount has a Euro-adaptor that allows for lateral adjustments and accommodates off-set ball adapters as well as off-set 3 and 4 way levellers.



AL-2386 Top section with double tube connection



AL-2387 Bottom section with adjustable Euro-adaptor and double tube connection

// ACCESSORIES FOR GF-COMBI-RIG & HILO SWIVEL

For this product there is a custom designed flight case available!



K-1502



AL-2362 Tube connector for Combi-rig



AL-2363 Connector for counterweight rod on Euro-adaptor M12 **AL-2361** Counterweight rod (horizontal/vertical)



AL-2368 Double ended »female« Euro-adaptor



AL-2369 Euro-adaptor for Combi-rig tubes



AL-2367 Universal-Holder (Euro-adaptor to 25 mm connection pin)* *without pin



AL-2405
Double ended Euro-adaptor



AL-2362S Combi-rig tube set
15/35/73 cm [6" / 14" / 29"], 2 safety screws



Combi-rig as Bazooka Riser on GF-Base Centre Plate

// RISERS & BAZOOKAS



Adjustable riser
[35–68 cm / 13"–26", 50–115 cm / 20"–45"]



Riser
[10/20/30/40/50 cm, 4"/8"/12"/16"/20"]



AL-2355 Maxi Cranked Riser,
adjustable [58–91 cm, 23"–36"]



Mini Cranked Riser
AL-2312 10–14 cm / 4"–6.5"
AL-2317 14–22 cm / 6.5"–9"
AL-2315 29.5–49 cm / 11 1/2"–19"



AL-2358 Euro-adaptor
with bracing bracket
AL-2358/1 Ratchet strap
for bracing bracket
[3 pcs. required]
AL-2358/2 Ring bolt
for bracing bracket
[3pcs. required]



AL-2351
Riser with adjustable tilt



AL-2410
Rotatable Bearing

// SEATS AND SEAT ARMS



AL-1031 Dolly seat



AL-1031/1 Dolly seat
[off-centre]



AL-1030 Crane seat
with seat belt



AL-1032 Dolly seat cover/cushion
AL-2240 Connection pin 25 mm
AL-2240/1 Connection pin 25 to 28mm



Seat arm combined
AL-2230 30 cm/12" **AL-2220** 20 cm/8" **AL-2210** 10 cm/4"



Seat arm vertical
AL-2211 10 cm/4" **AL-2212** 20 cm/8" **AL-2213** 30 cm/12"

// COUNTERWEIGHTS



AL-1011 Trolley for large
weight carriers



AL-2403 Counterweight
12 kg/26 lbs



AL-1004 Stainless steel
weight shell (empty) **AL-1005** **AL-1002** **AL-1003**
Counterweight 14/8/4 kg [31/18/9 lbs]

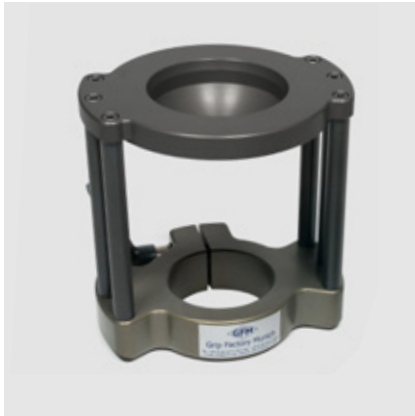


AL-1014 Carrier for 7
counterweights



AL-1010 Carrier for 14
counterweights

// BOWL MOUNTS



AL-2100
Ball Adapter 100 mm



AL-2150
Ball Adapter 150 mm



AL-2150/1
Mitchell on Euro-adapter

// SPARE BOWL FOR BALL ADAPTER



AL-2113 Spare bowl for Ball Adapter, 100 mm



AL-2114 Spare bowl for Ball Adapter, 150 mm



AL-2155 Mitchell plate for Ball Adapter



AL-2160 Mitchell 4 Way Leveller for Sliders and Ball Adapters



AL-2118 Adapter Ring (100 to 75 mm)

AL-2110 Adapter Ring (150 to 100 mm)



AL-2111 Safety plate for underslung Double-Euro and Ball adapter



AL-2117 150 mm Bowl to Mitchell adapter

// OFF-SET BALL ADAPTER



AL-2151

AL-2152

AL-2153

AL-2154

Off-set Ball Adapter, 150 mm

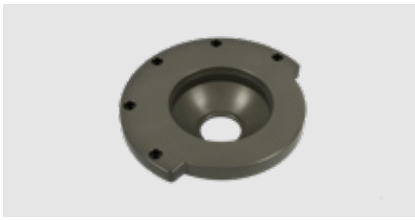
AL-2151 short (18 cm / 7")

AL-2152 middle (25 cm / 10")

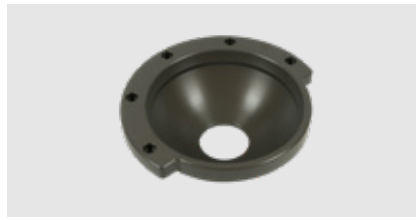
AL-2153 long (35 cm / 14")

AL-2154 extra long (50 cm / 20")

// SPARE BOWL FOR OFF-SET BALL ADAPTER



AL-2112 Spare bowl for Off-Set Ball Adapter, 100 mm



AL-2115 Spare bowl for Off-Set Ball Adapter, 150 mm



AL-2116 Spare bowl for Off-Set Ball Adapter, 150 mm, with foot rest [2 pcs.]



AL-2119
Euro-adapter for Off-Set Ball Adapter



AL-2156 Mitchell plate for Off-Set Ball Adapter



AL-2159 Mitchell 4 Way Leveller for Off-Set Ball Adapter

// OFF-SET & COMBI-RIGS



Off-Set Bracket - Euro to Euro
AL-2130 Euro long [35 cm / 14"]
AL-2131 Euro middle [25 cm / 10"]
AL-2132 Euro short [18 cm / 7"]



Extension tube with 2 safety screws
AL-2366/1 Extension tube [15 cm / 6"]
AL-2366/2 Extension tube [35 cm / 14"]
AL-2366/3 Extension tube [73 cm / 29"]

// OFF-SET BALL ADAPTERS 150 MM WITH INTEGRATED PAN BEARING (IPB)



Off-Set Ball Adapter 150 mm with integrated Pan Bearing (IPB)
AL-2161 with IPB, 150 mm bowl, Short [18 cm / 7"]
AL-2162 with IPB, 150 mm bowl, Middle [25 cm / 10"]
AL-2163 with IPB, 150 mm bowl, Long [35 cm / 14"]
AL-2164 with IPB, 150 mm bowl, Extra long [50 cm / 20"]

// STANDARD MITCHELL MOUNTS



AL-2120 Mitchell 3 Way Leveller
[standard]



AL-2150/1 Mitchell on Euro-adaptor

// MITCHELL 3 AND 4 WAY LEVELLERS



Off-Set Mitchell 3 Way Leveller
AL-2121 long [35 cm / 14"]
AL-2124 medium [25 cm / 10"]
AL-2125 short [18 cm / 7"]

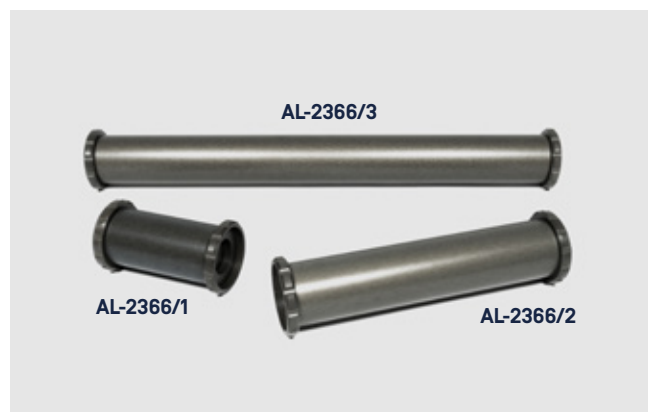


Off-Set Mitchell 4 Way Leveller
AL-2126 long [35 cm / 14"]
AL-2127 medium [25 cm / 10"]
AL-2128 short [18 cm / 7"]

// OFF-SET AND COMBI-RIGS



Off-Set Bracket - Euro to Euro
AL-2130 Euro long [35 cm / 14"]
AL-2131 Euro medium [25 cm / 10"]
AL-2132 Euro short [18 cm / 7"]



Extension tube with 2 safety screws
AL-2366/1 Extension tube [15 cm / 6"]
AL-2366/2 Extension tube [35 cm / 14"]
AL-2366/3 Extension tube [73 cm / 29"]

// OFF-SET MITCHELL 3 AND 4 WAY LEVELLERS WITH INTEGRATED PAN BEARING (IPB)



Off-Set Mitchell 3 Way Leveller with IPB
AL-2121/1 long [35 cm / 14"]
AL-2124/1 medium [25 cm / 10"]
AL-2125/1 short [18 cm / 7"]



Off-Set Mitchell 4 Way Leveller with IPB
AL-2126/1 long [35 cm / 14"]
AL-2127/1 medium [25 cm / 10"]
AL-2128/1 short [18 cm / 7"]

// VARIOUS MITCHELL ADAPTERS



AL-2384 Euro-adapter to Mitchell plate



AL-2117 150 mm Bowl to Mitchell adapter



AL-2159 Mitchell 4 Way Leveller for Off-Set Ball Adapter



AL-2160 Mitchell 4 Way Leveller for Slider and Ball Adapter

// MITCHELL TOOLS



AL-2447 Mitchell Castlenut Spanner



AL-2446 Locking tool for remote head nuts / Mitchell fitting

// EURO-ADAPTERS



AL-2217 Euro-adapter for seat connection pin (without pin)



AL-2369 Euro-adapter for Combi-rig tubes



AL-2405
Double ended Euro-adapter



GF-5004
Euro-adapter mount



AL-2259
Seat pin to Euro-adapter



AL-2218 Euro-adapter (bolt-table from bottom with 1 bolt)



AL-2219 Euro-adapter (bolt-table from top with 3 bolts)



AL-2358 Euro-adapter with bracing bracket

AL-2358/1 Ratchet strap for bracing bracket (1 pc.) – 3 pcs. required

AL-2358/2 Ring bolt for bracing bracket (1 pc.) – 3 pcs. required

// TUBE ADAPTERS



AL-2215 Euro-adapter for scaffold tube



AL-2216 Paddle Mount: Euro-adapter for 2 scaffold tubes



AL-2216/1 Paddle Mount: Euro-adapter with 2 scaffold adapters



AL-2592 Track and studio wheel adapter for Scaffold tube with 3/8" to M10 adapter and track wheel connection bolt

// TRIPOD ADAPTERS



AL-2380 Tripod adapter (150 mm) with 3/8" Camera-screw and Euro-adapter



AL-2381 Tripod adapter (150 mm) with 3/8" screw



AL-2382 Flat base tripod adapter (150 / 100 mm) with Euro-adapter

// GF-CAMERA SUPPORT PLATE



AL-2185 GF-Camera Support Plate 60
Dimensions: 60 x 9.7 x 2.7 cm / 23.6" x 3.8" x 1"
Weight: 1.7 kg / 3.7 lbs

AL-2186 GF-Camera Support Plate 30
Dimensions: 30 x 9.7 x 2.7 cm / 11.8" x 3.8" x 1"
Weight: 0.86 kg / 1.9 lbs

FEATURES

- The 30 cm / 12" and the 60 cm / 24" dovetail, camera support plates, are CNC machined from high grade aluminium and Hard Coated to provide a surface hardened, scratch-proof finish
- Stable, nonflex plate
- Captive, floating 3/8" threaded inserts [lockable] for easy mount to head
- Surface hardened finish [Hart-Coat®]

// GF-LOW ROCKER

The GF-Low Rocker provides, on the one hand stable, low level, camera pan and tilt movements. On the other hand, it is a very solid camera mount for securing the camera in fixed positions [e.g. on a camera car].



AL-2190 GF-Low Rocker

FEATURES

- 360° panning
- 45° tilt
- Height: 12 cm
- Weight: 6.3kg
- Extremely solid pan and tilt locks
- Left and righthand handle positions
- 3 way levelling base

// GF-TILT PLATE



AL-2180 GF-Tilt Plate

FEATURES

- Operates with a self-locking spindle drive giving stepless adjustment ranging from 0 to 106°
- Max. payload: 30 kg / 66 lbs
- Dimensions: 28 x 12.5 x 4 cm / 11" x 5" x 1.5"
- Weight: 2.4 kg / 5.2 lbs

// HI HATS



AL-2123
Hi Hat with 150 mm bowl



AL-2123/1
Hi Hat with 100 mm bowl



AL-2123/2
Hi Hat with Mitchell plate



AL-2123/3
Hi Hat Mini-Bazooka base with Euro-adaptor

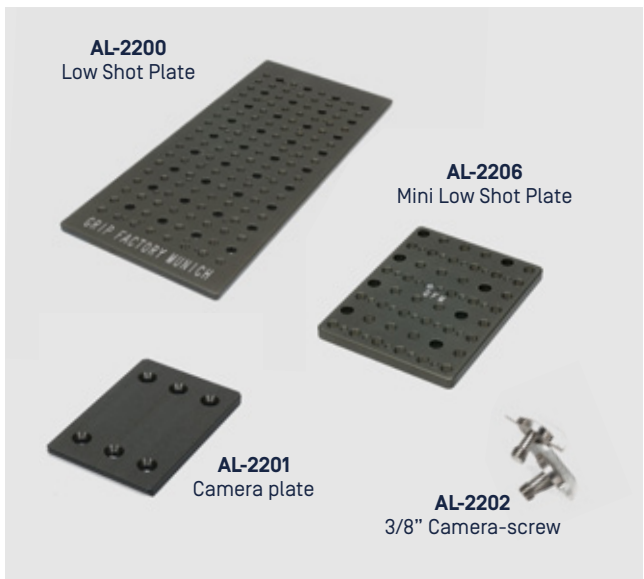
// GF-LOW SHOT RIG



AL-2205
Low Shot Rig

The GF-Low Shot Rig can be attached to an underslung fluid head resulting in a solid, hanging camera mount, utilizing the fluid head's drag and dampening.

// GF-LOW SHOT PLATE



AL-2200
Low Shot Plate

AL-2206
Mini Low Shot Plate

AL-2201
Camera plate

AL-2202
3/8" Camera-screw

The GF-Low Shot Plate enables the camera to be mounted parallel to an underslung fluid head. A dedicated camera plate and 3/8" screws are available.

// GF-OFFSET RIG

The GF-Offset Rig is a classic, solid, off-set arm with Euro mount. It is adjustable in both the horizontal and vertical axis. The front mount accepts Euro-adapter and Combi-rig tubes.



AL-2372 Off-set rig with double Euro-adapter, adjustable and rotatable
AL-2373 Counterweight rod for Offset rig

FEATURES

- Euro-adapter mount with quick-release
- Solid, double locking brake
- Weight: 10.6 kg / 23.4 lbs
- Reach: 23 – 69 cm / 9 – 27"
- Max. payload: 80 kg / 176.4 lbs
- Surface hardened finish [Hart-Coat®]

// GF-TRIPOD

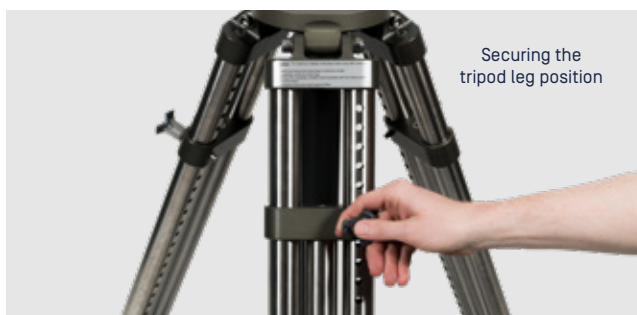
The GF-Tripod is a heavy duty, stainless steel construction built for mounting jibs and heavy camera rigs on. Height adjustment is secured by locking pins ensuring that the tripod legs cannot fold in unwantedly when under load.



GF-9200s GF-Tripod with Euro-adapter

FEATURES

- Euro-adapter mount
- Easy height adjustment
- Extremely sturdy and stable
- Weight: 16 kg / 35 lbs
- Setup height: 79 – 132 cm / 31 – 52"
- Max. payload: 400 kg / 881 lbs



Securing the tripod leg position



Level indicator



Fine level adjustment



